



Vision 250 Pan and Tilt Head, Ball Base

SKU: 3465-3S

A light, versatile tool for OB/EFP field production offering a wide payload capacity

PRODUCT DESCRIPTION

The class leading Vision 250 supports the latest system cameras complete with viewfinders, prompters and pan bar controls for studio production as well as OB/EFP applications. The TF drag system offers infinite adjustment and because it works independently of the balance system, allows precision balancing of the pan and tilt axis so that the effort needed to follow the action becomes totally insignificant.

The Vision 250 also includes illuminated drag controls and a digital counterbalance readout, ensuring simple and repeatable camera set-up in any lighting situation.

Key features

- Instant responsiveness from Perfect Balance
- Thin Film drag (TF) for outstanding whip pan
- High contrast amber LED levelling bubble for quick, precise set-up
- Extensive operating temperature from -40°C to +60°C
- Automatic back-lit dials for low light conditions

TECHNICAL SPECIFICATIONS

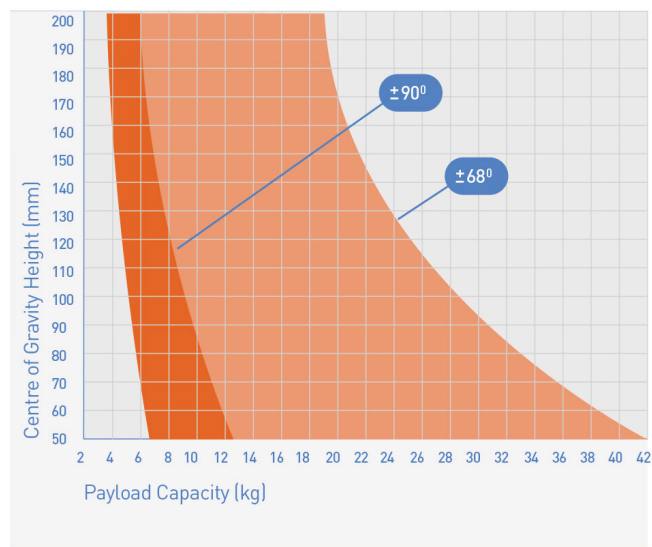
Application	Documentaries, Live, Multicam Studio, Outside Broadcast, Sports
Camera Plate Fixing	Two-way Sliding Plate
Counterbalance	Perfect Balance infinitely adjustable spring balance with readout
Payload	3 kg to 33 kg 6.61 lb to 72.75 lb
Weight	6.1 kg 13.45 lb
Drag	TF Drag System with backlit and calibrated control
Pan Bar Type	Telescopic
Pan Bar Count	1
Camera Fixing	Vision sliding plate with two 3/8 in. camera fixing screws
Level Bubble	Yes (Illuminated)
Platform Adjustment	+45 to -70
Bowl size	100mm, 150 mm
Length	24.4 cm 9.61 in
Tilt Range	±60° to +/-90°
Width	15.9 mm 0.63 in
Battery Type	9V, PP3 battery
Height	18.4 cm 7.24 in

IN THE BOX

- Vision 250 Pan and Tilt Head 150mm Base
- Camera Plate complete with 3/8 in. camera screws (2)
- Telescopic Pan Bar (3219-91)
- Bowl Clamp Knob
- User Guide

DATA SHEETS

Vision 250 Balance Chart



YOU MAY ALSO LIKE...

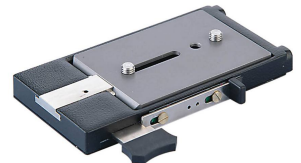


[Heavy Duty Flexible Ground Spreader](#)

[Spread-Loc Mid-Level Spreader](#)



[Hard Transit Case for EFP Systems](#)



[Adaptor Automatic EFP QUICKFIT incl. Wedge & 3/8\"](#)